



40124SHL

STANDARD COMPONENTS INCLUDE:

Boom, boom rest, boom hoist cylinder, 2-speed winch, load line and 5 ton (4,5 mt) overhaul ball, turret with 8,300 lbs (3,765 kg) counterweight, ride-around operator control station with seat, wireless LMI & ATB protection systems, sub-frame with access ladders and integrated radio remote controlled outriggers, 3-section pump, hydraulic reservoir and oil cooler.

HYDRAULICS

- 8-Bolt direct mounted PTO with SAE C output (factory mounted units only)
- Three section vane pump, SAE C input

Pump Section	2000 RPM	2000 RPM
Shaft End Pump:	41.67 GPM @ 100 PSI	158 LPM @ 100 PSI
Center Pump:	28.33 GPM @ 100 PSI	107 LPM @ 100 PSI
Cover End Pump:	11.67 GPM @ 100 PSI	44 LPM @ 100 PSI

- Hydraulic reservoir - 115 gallon (435 liter) capacity

WARNING SYSTEMS

- Wireless LMI with display and crane function shut-offs for overload protection
- Wireless anti-two block system

OPTIONS

- Single front stabilizer (required option on all SHL)
- 8' (2,4 m) Flatbed - wood or steel
- 24" (610 mm) Bulkhead
- 31' (9,5 m) 1-Section fixed jib
- 30'-6" (9,3 m) - 55' (16,8 m) 2-Section telescopic jib
- 5/8" (15,9 mm) diameter 6 x 25 EIPS IWRC wire rope
- Auxiliary winch same as main, includes rooster sheave
- Auxiliary lower sheave block for 7 to 8 part line
- Load block - 1, 3 & 5 sheave options
- Operator cab with diesel heater, air conditioner (hydraulic) upgrade option

BOOM

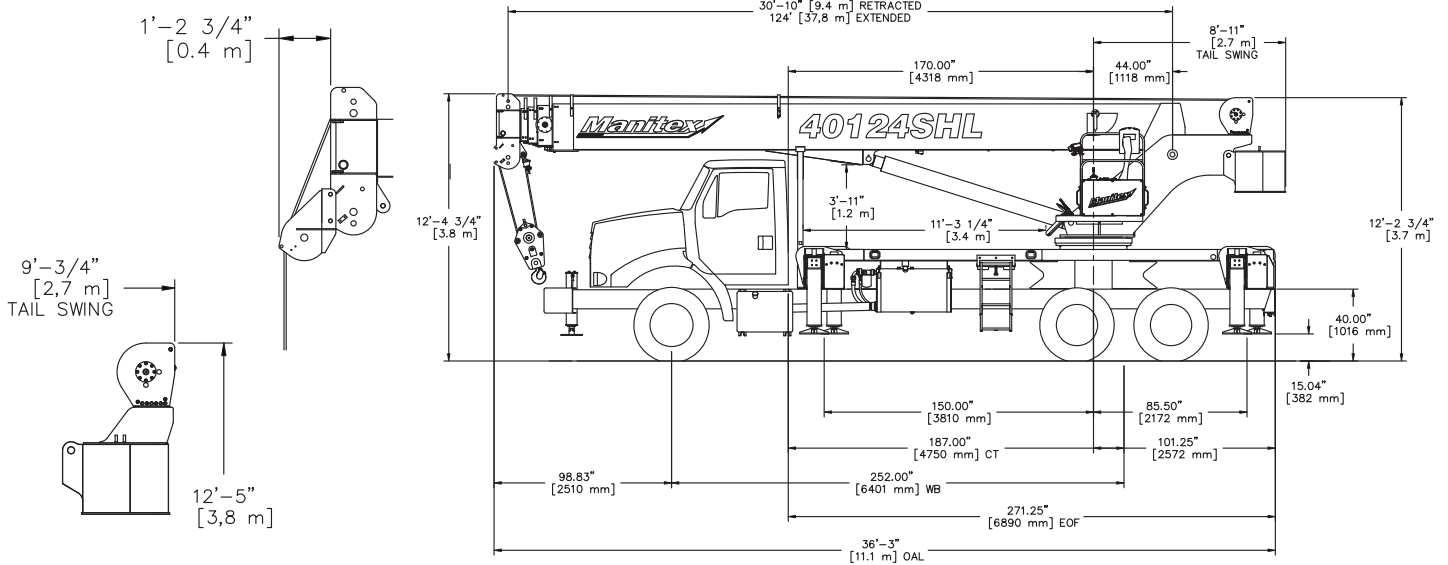
- 40 Ton (36,3 mt) capacity @ 5' (1,5 m) radius
- 5-Section 124' (37,6 m) proportional boom
- 5-Sheave quick reeve boom point

HOIST

- Maximum theoretical line speed 453 fpm (138 mpm)
- Maximum theoretical bottom-layer line pull 13,050 lb (5,919 kg)
- Wire Rope – 380' (115,8 m) 5/8" (15,9 mm) diameter rotation resistant

In order to ensure continuous improvement, Manitex reserves the right to change design and specifications without notice.

- Hose reel - boom mounted
- Toolboxes
 - 24" L x 20" W x 18" H (610 mm x 508 mm x 457 mm)
 - 48" L x 18" W x 18" H (1220 mm x 457 mm x 457 mm)
- 2-Person gravity leveled non-rotating basket - 600 lb (272 kg) capacity
- 2-Person gravity leveled rotating (manual) basket - 1,200 lb (544 kg) capacity
- 4-Function radio remote crane control system 900 MHz
- 4-Function radio remote crane control system 433 MHz
- Three-section gear pump, SAE C input



CHASSIS DATA 40124SHL

Wheelbase (WB)	252" [6 401 mm]
Cab to Tandem (CT)	187" [4 750 mm]
Cab to End of Frame (EOF)	271" [6 883 mm]
Frame Section Modulus at 180°/360° Area of Operation	25.0 in ³ 110,000 psi 758 422 kPa
Front Axle Gross Weight Rating	20,000 lb [9 072 kg]
Rear Axle Gross Weight Rating	44,000 lb [19 958 kg]
Minimum Truck Axle Weight - Front**	9,800 lb [4 445 kg]
Minimum Truck Axle Weight - Back**	8,000 lb [3 629 kg]
Nominal Frame Width	34" [864 mm]

*Frame section modulus at 360° area of operation requires front bumper stabilizer. **Minimum chassis weight is required to meet 85% stability requirements. Chassis data is general - not for engineering. Some dimensions depend on truck selection.

WEIGHTS 40124SHL

Crane Without Cab	37,246 lb [16 895 kg]
Cab Alone	575 lb [261 kg]
Flat Bed 8' (2,40 m)	750 lb [340 kg]
Fixed Jib 31' (9,50 m)	850 lb [386 kg]
Telescopic Jib 30' 6" - 55' (9,3 m - 16,8 m)	1,650 lb [748 kg]

MAXIMUM TIP HEIGHT (A) 40124SHL

Configuration	Boom 124' [37,8 m]
Extended Boom	132' 4" [40,3 m]
Fixed or Retracted Jib	163' 7" [49,9 m]
Extended Jib	187' 0" [57,0 m]

